



STATE LIBRARY¹
QUEENSLAND

Asia and the World

(1750 to 1914)

Student research guide

History | Year 9

Cover: [Taj Mahal](#), 2014, by Steven Zwerink

© 2021. This work is licensed under the Attribution-NonCommercial-ShareAlike 4.0 International Creative Commons ([CC BY-NC-SA 4.0 license](https://creativecommons.org/licenses/by-nc-sa/4.0/)) by State Library of Queensland. You are free to share and adapt the work under the following terms: you must give appropriate credit, it is for a non-commercial purpose and, if you remix, transform, or build upon the materials, you must distribute your contributions under the same license as the original.

For other uses please contact State Library at copyright@slq.qld.gov.au



Date prepared: 12 August 2024

Date revised: 07 April 2026

Copyright information for teachers

This research guide is designed for individual use by students studying The Australian Curriculum: History.

Please note, due to licensing arrangements, State Library’s subscription databases and eBooks are for private research and study purposes only. They may not be used as teaching resources in classroom environments in schools or other educational institutions and students must not be required to access specific databases or eBooks as part of the curriculum.

Teachers can advise students on State Library’s resources and encourage their use to help with their studies and research. Students are encouraged to access State Library’s resources at school, but not during class time.

Teachers are most welcome to advise students what is available via State Library, and to encourage students to make use of eBooks and databases to help with their studies. It is permissible for a teacher to demonstrate the use of State Library’s catalogue, and to point out how various online material can be accessed.

It is also permissible for students to access State Library’s online resources at school – but this must not be during class time. An example of permitted use might be where students have a spare period when they work on assignments or homework, and they are accessing databases as private members of State Library. Information about joining State Library is available [here](#).

Please also note that State Library has digitised a range of material such as diaries, and out-of-copyright publications held in our collections. There are no restrictions on the use of this material as part of a teaching program – and no requirement to be a member of the Library to use this material. This type of material can easily be found, [searching State Library’s One Search catalogue](#) using the “SLQ digitised collections” option in the dropdown menu.

For more information about the use of copyright materials visit [Understanding copyright](#) or contact State Library at copyright@slq.qld.gov.au

Overview

State Library is a great place to learn about topics studied in Asia and the World and to find information to complete your research-based assessments.

[State Library's One Search catalogue](#) is the gateway to an extensive suite of national and international journals, databases, eBooks, encyclopedias, newspaper archives, and collections of thousands of historical images, letters, artworks, diaries and artefacts to interrogate as sources.

This guide is designed to help you discover items on topics studied in Asia and the World that you can access on site, from your school or home.

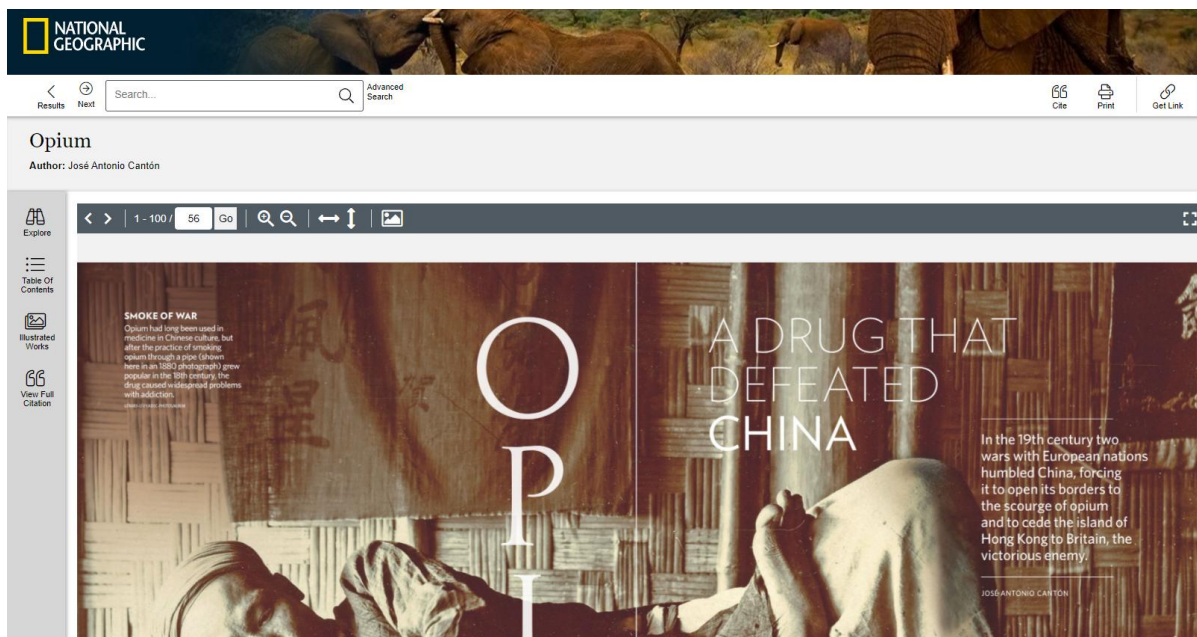
Before you get started

[Become a member](#) of State Library of Queensland (it's free!).

Once you have joined State Library, log in to your account in [One Search](#) so you can use the links in this research guide to access the featured collection items.

Featured Databases

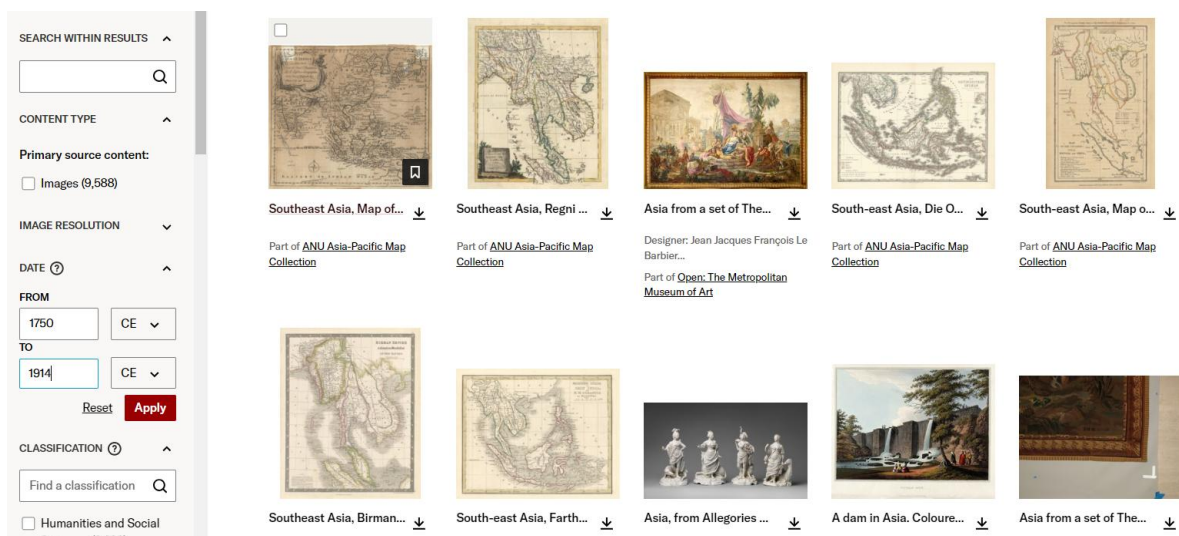
The [National Geographic Virtual Library](#) has articles, books, maps, videos and more on Asian societies between 1750 and 1914.



The [Britannica Library](#) has articles, images, videos, primary sources, eBooks and more on Asian societies between 1750 and 1914 with a selection of resources especially for teenagers.



[JSTOR](#) is a great resource for finding primary sources from Asia between 1750 and 1914.



Featured Map



More

Search the catalogue

Continue searching for more on Asia between 1750 and 1914 using these subject searches:

[China -- History -- Qing dynasty, 1644-1912](#)

[East India Company -- History](#)

[Mogul Empire](#)

[China -- History -- Boxer Rebellion, 1899-1901](#)

[Tokugawa Shogunate](#)

[China -- History -- Opium War, 1840-1842](#)

[United States Naval Expedition to Japan \(1852-1854\)](#)

[India -- History -- British occupation, 1765-1947](#)

[Cixi, Empress dowager of China, 1835-1908](#)

Borrow items

Order items online through State Library's One Search catalogue and [borrow items from State Library's collections](#) when you visit us onsite.

Ask a librarian

Ask one of State Library's expert librarians for [help with your research inquiry](#).

Visit State Library with your class

Ask your teacher to [bring your classroom to State Library](#) and explore exhibitions, research for your assessments or undertake independent study.